



Increase Passive + Active Recreation

One of the primary goals for the Spillway property is to increase the number of people that use and enjoy the public land by offering and encouraging a variety of activities that attract people of all ages and abilities. The Spillway Vision looks to:

- establish a connected network of trails for biking, walking, running, and snow shoeing
- provide formal and informal locations for fishing and wildlife viewing
- add 3 universally accessible canoe/kayak launches (Tucker, between I94/Harper, and at Wellington Crescent)
- consider the addition of disc golf on the north side of the Spillway between Union Lake and Harper
- establish a 'central' gathering space (Central Park) on the southside of the Spillway between Harper and Metropolitan Parkway including parking, restrooms, playground, picnic pavilions, fishing, trails and connected walkways, an area for small scale performances, open lawn for playing, seating, and shade
- improve access to the Spillway along Wellington Crescent Road with the addition of parking, restrooms, open lawn for art fairs or small scale events, as well as a small plaza space for gathering and access to a potential future Great Lakes Educational Boat Launch
- explore the opportunity to have the Spillway be home to a shallow-bottom Great Lakes Educational Boat that could take small groups up and down the Spillway and into Lake St. Clair and educate about the Great Lakes and surrounding wildlife and environment
- seek partners and continue to discuss the potential for a Regional Nature Center and Aquarium to be located at Shadyside Park (additional details on following pages in Mt. Clemens section of report)

Awareness + Education via branding + signage

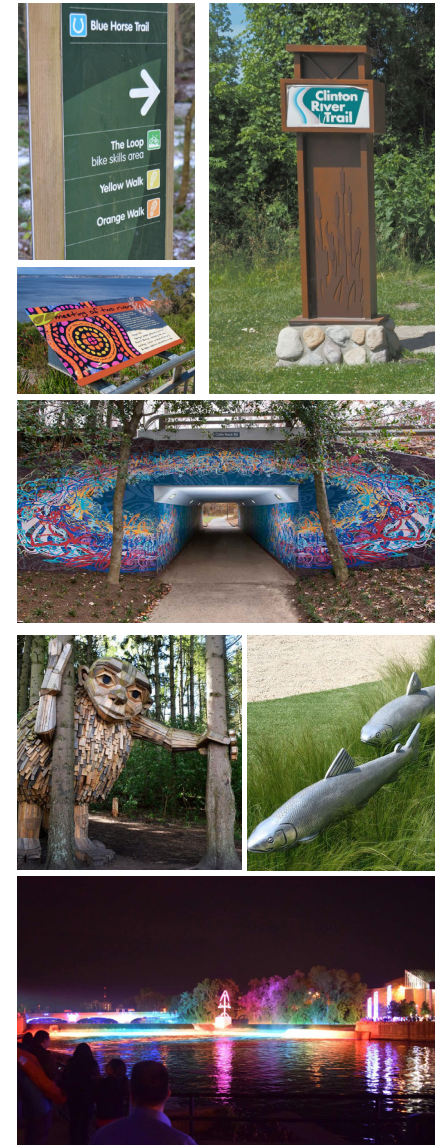
- develop a 'brand' for the Clinton River Spillway that can be used on signage, social media, websites, brochures, etc., to raise the level of awareness how to access and how to use the public asset
- design a signage and wayfinding package that will assist in raising awareness of the Spillway and assist people with understanding where they can park, walk, fish, ride their bike, kayak/canoe, picnic, etc.
- incorporate interpretive signs along the Spillway property to educate visitors on the topics such as history of the Spillway, flood control, habitat restoration, invasive species, etc

Integrate **Art**

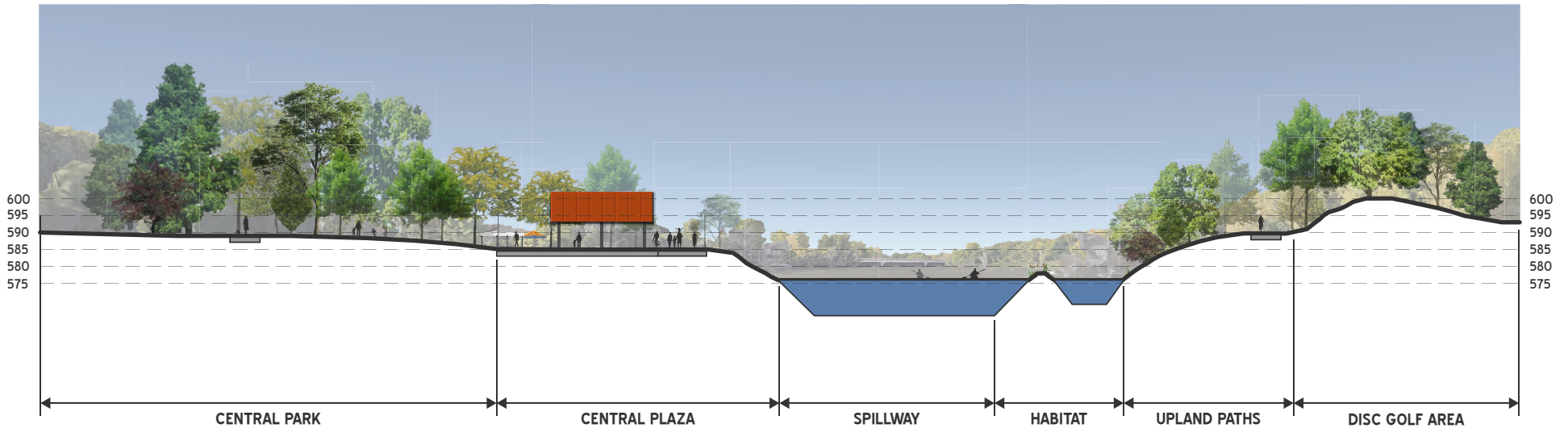
- consider public art (temporary and permanent) in all Spillway improvements to inspire, add interest, and improve aesthetics
- incorporate art that reflects, elevates, and interprets the natural environment
- partner with various entities and institutions such as the Anton Art Center, DIA, etc. to review Spillway improvement plans, commission artists, and realize funding opportunities
- work with MDOT and the Department of Roads to incorporate art onto the walls of the I94 and Metropolitan Parkway trail underpasses
- integrate creative lighting as an art installation

Coordinate **Operations + Management**

- establish a Joint Advisory Committee that meets regularly throughout the year in order to maintain momentum, advance ideas, discuss priorities, and coordinate capital improvements and programming
- partner with stakeholders and agencies to implement the long-term vision over time and in a coordinated manner including the Spillway Drainage Board, Macomb County, Department of Roads, Harrison Township, Clinton Township, Mt. Clemens, Huron Clinton Metroparks, and the Clinton River Watershed Council



CLINTON RIVER Spillway VISION CROSS SECTION | Looking Upstream (west) at Central Park



Regional trail network on both sides of the Spillway providing connections to other major destinations in the area



Open lawn areas for playing, gathering, and programs



Gathering space for small performances and events

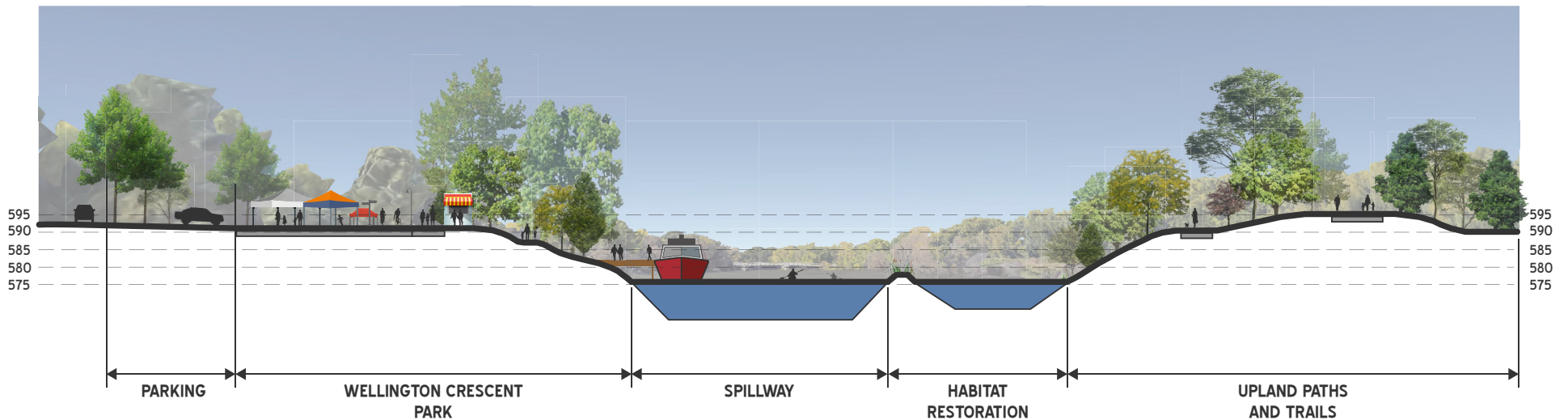


Universally accessible kayak/canoe launch incorporated into Clinton River Water Trail



Disc golf as well as connecting trails and paths

CLINTON RIVER Spillway VISION CROSS SECTION | Looking Upstream (west) at Wellington Crescent Plaza and Educational Boat Dock



Parking areas incorporating green stormwater infrastructure



Open lawn areas for a variety of events and festivals as well as small gathering plaza with restrooms



Great Lakes Educational Boat dock



Additional habitat restoration, pools, shoreline stabilization, habitat creation, invasive species control, informal fishing access and wildlife viewing



Regional trail network on both sides of the Spillway providing connections to other major destinations in the area

VISION + PRIORITIES BY AGENCY

Macomb County, Harrison Township, Clinton Township, and the City of Mt. Clemens are key agencies not only involved in the development of a long-term vision for the Spillway, but in the advancement of the vision into implementation. Details of the long-term vision and priority action items for each of these agencies is documented in this section of the study document.

MACOMB COUNTY



A number of Macomb County Departments participated in the development of the long-term vision for the Spillway property and will be essential in continuing the discussion, coordinating partners, seeking funding, implementing projects, programming, etc. Key priorities for the next several years for Macomb County include:

- Take a leadership role in the **establishment of a Joint Advisory Committee** that will work closely with the Spillway Drainage Board to coordinate implementation, management, and maintenance efforts associated with the long-term Spillway Vision.
- Support the Spillway Drainage Board and Joint Advisory Committee in **applying for funding** to advance the Spillway Vision.
- **Present the Spillway Vision** to various Macomb County Departments in order to ensure awareness, coordination, and opportunities to partner.
- **Incorporate the Spillway Vision** into other on-going and related Macomb County efforts including the county-wide Greenway Plan, Trail Plan, and Water Trail plans.
- Encourage and support Harrison Township, Clinton Township, and Mt. Clemens to incorporate the Spillway Vision into their **local plans and documents**.
- Coordinate with the Department of Roads and MDOT for **road crossing improvements** at Jefferson Avenue, Union Lake, Harper Avenue, Wellington Crescent, and Gratiot Avenue to ensure pedestrians and cyclists are prioritized.
- Actively **advocate** for Spillway Vision projects with various local, regional, state, and federal agencies.
- In partnership with the Spillway Drainage Board and Joint Advisory Committee, **initiate near-term projects** that will raise awareness of the Spillway and increase usership including:
 - create a **marketing campaign** that can be used by all partners to elevate the awareness that the Spillway property is public, where it is, how it can be accessed, what activities can be done throughout the year, and what improvements are planned.
 - develop **branding/environmental graphics** for the Spillway and seek funding to **install an initial phase of signs** to increase awareness and use of the Spillway.
 - seek partners such as the Anton Art Center to discuss **art installations** along the Spillway including improving the aesthetics of the locations where the existing trail passes beneath I-94 and Metropolitan Parkway.



HARRISON TOWNSHIP

There are a number of near-term and longer-term priorities for Harrison Township to continue to focus on and advance in cooperation with the Spillway Board and Joint Advisory Committee. These are described in no particular order.

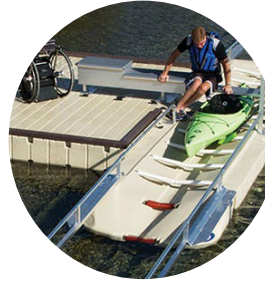
- Incorporate the Spillway Vision into Harrison **Township plans and documents** and share the Vision with other Harrison Township staff, Boards, and Commissions.
- Actively **participate in a Joint Advisory Committee** to coordinate and advance discussions related to improvements, operations, management, maintenance and programming along the Spillway.
- **Rebuild the existing Spillway Trail** as it is aging and in poor condition. Include improvements at the Jefferson Avenue crossing to prioritize the safety of pedestrians and bicyclists using the Spillway Trail system.
- Secure funding to construct a **pedestrian bridge over the Spillway** just west of Jefferson Avenue as part of the Great Lakes Way and Spillway Trail system.
- Secure funding to **improve access to the water** while protecting the shoreline and add a **restroom to the Jefferson Spillway Park/Pier**.
- Work with the Joint Advisory Committee to incorporate a **universally accessible canoe/kayak launch** along the Spillway in proximity to the Tucker Senior Center property.
- Establish the Tucker Center property as a **primary gathering space** and access point along the Spillway.
- Support the Spillway Drainage Board and Macomb County in future efforts to incorporate additional **habitat restoration and creation** projects along both the north and south sides of the Spillway.
- In joint efforts with other Spillway stakeholders, **seek funding to design and construct** additional trails, footpaths, and connections on both the north and south sides of the Spillway including the potential for a bridge over the Harrington Relief Drain, a small parking area near Jefferson Avenue, as well as informal fishing areas, wildlife viewing, and places of respite.

HARRISON TOWNSHIP | Clinton River Spillway Vision

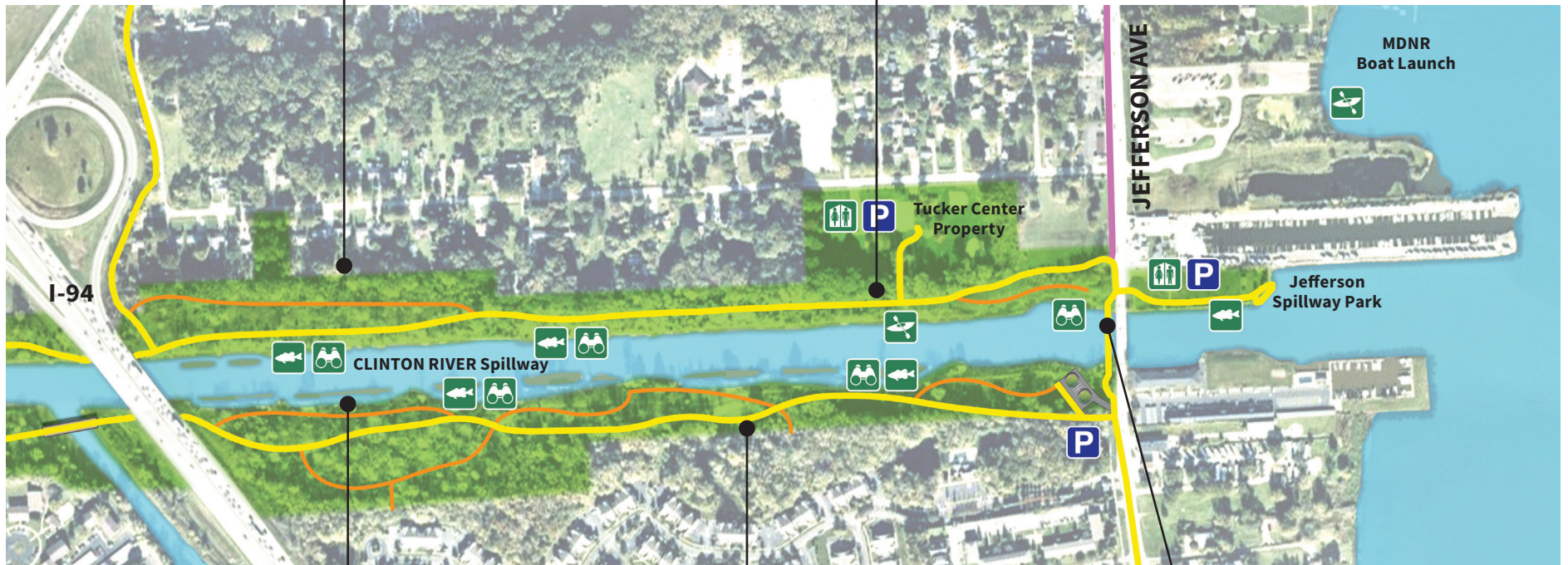
Informal, crushed stone footpaths providing access for wildlife viewing and connections to nearby parks and developments



Universally accessible kayak/canoe launch near Tucker Center property and incorporated into Clinton River Water Trail



- Existing/Proposed Regional Trail
- Existing/Proposed Footpath
- Existing/Proposed Connector



Additional habitat restoration, pools, shoreline stabilization, habitat creation, invasive species control, informal fishing access and wildlife viewing



Regional trail network on both sides of the Spillway providing connections to other major destinations in the area



Pedestrian bridge over Spillway, west of Jefferson Avenue



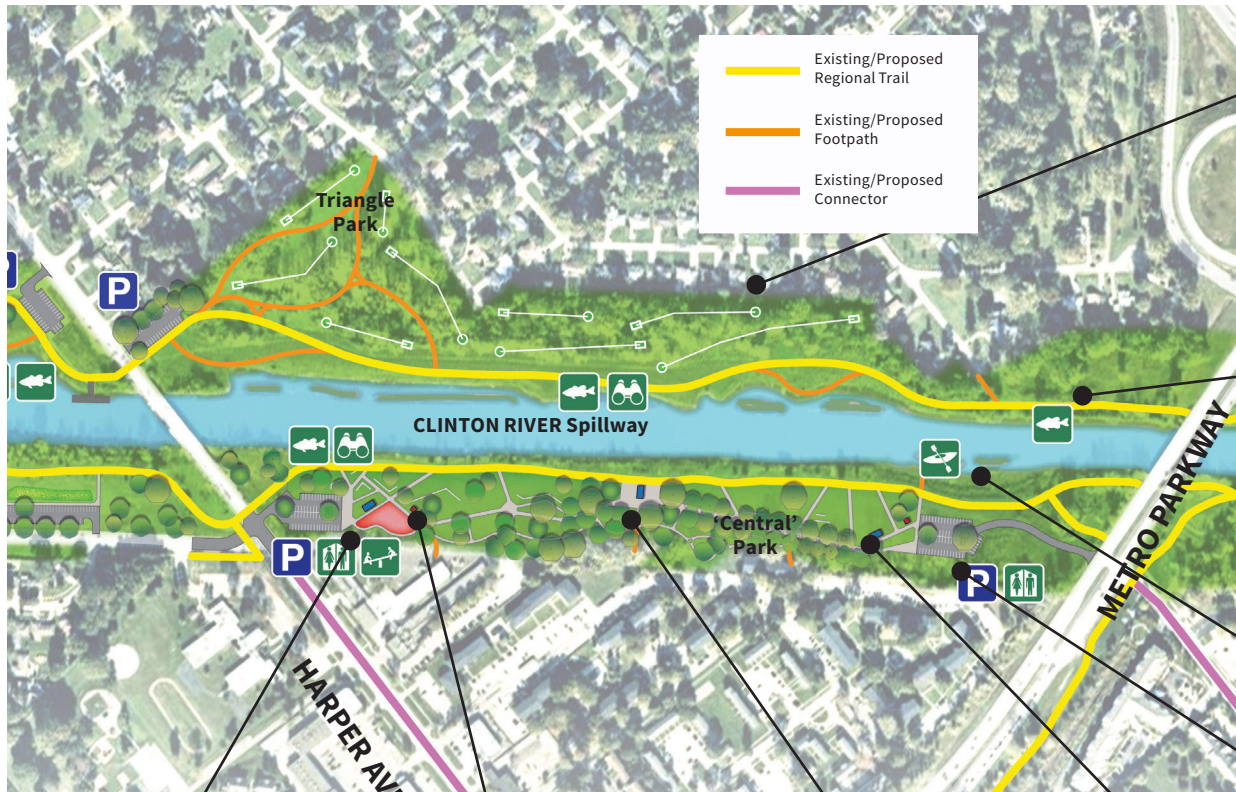


CLINTON TOWNSHIP | Metro Parkway to Harper Avenue

There are a number of near-term and longer-term priorities for Clinton Township to continue to focus on and advance in cooperation with the Spillway Board and Joint Advisory Committee. These are described in no particular order.

- Incorporate the Spillway Vision into Clinton **Township plans and documents** and share the Vision with other Clinton Township staff, Boards, and Commissions.
- Actively **participate in a Joint Advisory Committee** to coordinate and advance discussions related to improvements, operations, management, maintenance and programming along the Spillway.
- In joint efforts with other Spillway stakeholders, **seek funding to design and construct** additional trails, footpaths, and connections on both the north and south sides of the Spillway including road crossing improvements at Harper, a small parking area east of Harper on the north side of the Spillway, informal fishing areas, wildlife viewing, and places of respite.
- Partner with local **disc golf** design specialists to determine feasibility of installation on the north side of the Spillway between Harper and Metropolitan Parkway, including the Township's Triangle Park.
- Support the Spillway Drainage Board and Macomb County in future efforts to incorporate additional **habitat restoration and creation** projects along both the north and south sides of the Spillway.
- In joint efforts with other Spillway stakeholders, seek funding to design and construct a **signature 'central park'** along the Spillway on the southern portion of property between Harper and Metropolitan Parkway. The space is envisioned to be a central gathering space and destination with parking, restrooms, playground, several pavilions/shelters of various sizes, pathways, seating areas, access to the water, wildlife viewing, open lawn, trees, small outdoor performance space, universally accessible kayak/canoe launch, etc.

CLINTON TOWNSHIP | Clinton River Spillway Vision



Disc golf, connecting trails and paths, and small parking area on east side of Harper



Informal access to the water for wildlife viewing, fishing and respite



Universally accessible kayak/canoe launch incorporated into Clinton River Water Trail



A signature playground space near parking, restrooms and pavilion



Several pavilions and shelters of various sizes to allow for gathering



Gathering space for small performances and events



Open lawn areas for playing, gathering, and programs



Parking areas incorporating green stormwater management





CLINTON TOWNSHIP | Harper Avenue to Gratiot Avenue

There are a number of near-term and longer-term priorities for Clinton Township to continue to focus on and advance in cooperation with the Spillway Board and Joint Advisory Committee. These are described in no particular order.

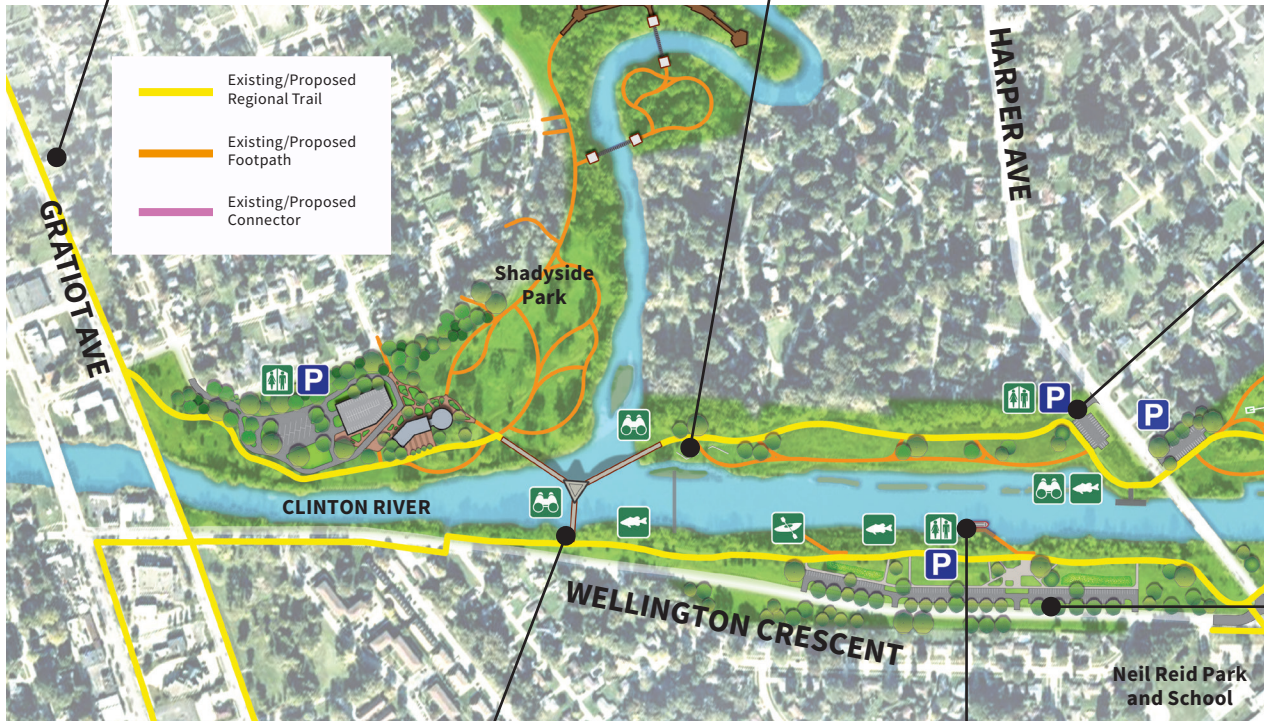
- Improved pedestrian connection between the Spillway and **Neil Reid Park/School**.
- In joint efforts with other Spillway stakeholders, **seek funding to design and construct** additional trails, footpaths, and connections on both the north and south sides of the Spillway including informal fishing areas, wildlife viewing, and places of respite.
- Work with Macomb County, the City of Mt. Clemens, and others to advocate for high quality **pedestrian and bicycle facilities along Gratiot Avenue** as a primary regional corridor.
- Coordinate and partner with Mt. Clemens and McLaren Hospital to implement high quality **pedestrian and bicycle facilities along Harrington Street** to provide a connection between the Spillway and the nearby Clinton Township trail network and park properties.
- Secure funding to construct a **parking area and universally accessible kayak launch off Wellington Crescent, on the south side of the Spillway** in order to provide improved access to the entire Spillway. It is envisioned, with the addition of parking, the Wellington Crescent green space could host a number of events.
- In joint efforts with other Spillway stakeholders, seek partners and funding for:
 - a **'Tridge' bridge with Great Lakes Observation Tower** that would connect to the regional trail network and other nearby amenities such as additional parking along Wellington Crescent, a proposed Great Lakes Educational Boat Dock, as well as the proposed kayak/canoe chute and fish passage.
 - a **kayak bypass chute and fish passage** to allow for movement and access up and down the Spillway and around the existing Spillway Weir. This is envisioned to be for small boats only (no motors) and to include an area for sitting/viewing.
 - a **Great Lakes Educational Boat Dock** with a small gathering plaza and restrooms on the southside of the Spillway to provide opportunities for people to get out onto the Spillway and into Lake St. Clair to experience and learn about a variety of topics.
 - a **Regional Nature Center and Aquarium at Shadyside Park** that would be a regional destination within one of the most densely populated urban areas of Macomb County

CLINTON TOWNSHIP | Clinton River Spillway Vision

Regional trail network along Gratiot providing connections to other major destinations in the area



Kayak bypass and fish passage to allow movement around Spillway weir. Include seating/viewing area.



Regional trail network on both sides of the Spillway providing connections to other major destinations in the area



Parking areas incorporating green stormwater infrastructure as well as open lawn areas for a variety of events and festivals



Three-pronged 'Tridge' bridge with Great Lakes Observation Tower creatively lit



Great Lakes Educational Boat dock and small gathering plaza with restrooms



CITY OF MT. CLEMENS

There are a number of near-term and longer-term priorities for the City of Mt Clemens to continue to focus on and advance in cooperation with the Spillway Board and Joint Advisory Committee. These are described in no particular order.

- Incorporate the Spillway Vision into **Mt. Clemens plans and documents** and share the Vision with other City staff, Boards, and Commissions.
- Actively **participate in a Joint Advisory Committee** to coordinate and advance discussions related to improvements, operations, management, maintenance and programming along the Spillway.
- In joint efforts with other Spillway stakeholders, **seek funding to design and construct** additional trails, footpaths, and connections on both the north and south sides of the Spillway including informal fishing areas, wildlife viewing, and places of respite.
- Support the Spillway Drainage Board and Macomb County in future efforts to incorporate additional **habitat restoration and creation** projects along both the north and south sides of the Spillway.
- Work with Macomb County, the City of Mt. Clemens, and others to advocate for high quality **pedestrian and bicycle facilities along Gratiot Avenue** as a primary regional corridor.
- Seek funding to implement high quality **pedestrian and bicycle facilities along Harrington Street** to provide a connection between the Spillway and the nearby Clinton Township trail network and park properties.
- Partner with the Joint Advisory Committee to continue to discuss opportunities to develop a **Regional Nature Center and Aquarium at Shadyside Park** that could incorporate:
 - 30,000 square foot building
 - Circulation, car, and bus parking
 - Indoor/outdoor programming, gathering, and event spaces
 - Green infrastructure
 - Neighborhood connections and buffers
 - Connections to forested areas via swinging bridges and elevated canopy walk
 - Habitat restoration and creation
 - Connections to the regional trail system and additional nature trails for exploration and education
 - 'Tridge' bridge with Great Lakes Observation Tower connecting to additional trails, additional parking along Wellington Crescent, a proposed Great Lakes Educational Boat Dock, as well as the proposed kayak/canoe chute and fish passage

CITY OF MT CLEMENS | Clinton River Spillway Vision



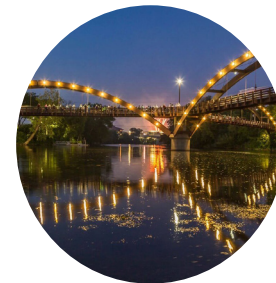
Elevated tree canopy walk to explore forested areas



Access to water and nature-based programming for all ages



Regional Great Lakes Nature Center with gathering spaces, trails, habitat restoration, and indoor and outdoor programming



Three-pronged 'Tridge' bridge with Great Lakes Observation Tower creatively lit

GREAT LAKES NATURE CENTER + AQUARIUM | Precedent Images



GREAT LAKES NATURE CENTER + AQUARIUM VISION



KEY FEATURES

- ① REGIONAL NATURE CENTER & AQUARIUM - 30,000 SF, 2-STORY
- ② PARKING DECK, APPROX. 120 SPACES
- ③ BUS PARKING AREA, 16 SPACES
- ④ GREAT LAKES OBSERVATION TOWER
- ⑤ WELLINGTON PARKING, 200 SPACES AND RESTROOMS
- ⑥ KAYAK/CANOE CHUTE AND FISH PASSAGE
- ⑦ PEDESTRIAN PLAZA
- ⑧ GREEN STORMWATER MANAGEMENT
- ⑨ WOODED PATH
- ⑩ ELEVATED BOARDWALK
- ⑪ PEDESTRIAN CABLE SUSPENSION BRIDGE
- ⑫ NEIGHBORHOOD CONNECTION
- ⑬ OPEN SPACE
- ⑭ HABITAT RESTORATION, POLLINATOR GARDENS, VERNAL WETLAND
- ⑮ REGIONAL TRAIL CONNECTION
- ⑯ RIVERSIDE ACCESS, BASKING LOGS, HABITAT STRUCTURES
- ⑰ EXISTING SPLASH PAD
- ⑱ WEIR SEATING/VIEWING AREA
- ⑲ GREAT LAKES EDUCATIONAL BOAT DOCK



October 31, 2022

Clinton River Spillway Intercounty Drain Drainage Board
Macomb County Public Works Commissioner's Office
21777 Dunham Road
Clinton Township, MI 48036

Attn: Intercounty Drain Drainage Board Members
C/O Mr. Jeff Bednar, P.E., Environmental Resources Manager

Re: EGLE State High Water Infrastructure Grant Program
Grant Application for the Clinton River Spillway

HRC Job No. 20221025.86

Dear Drainage Board Members:

As you are aware, the previous Clinton River Spillway Project(s) developed future phases of work that were not able to be funded under the NOAA and EPA grants. Since then, HRC has monitored grant opportunities for these phases and have ensured they were still identified as possible future projects with the relevant agencies. Recently, one of our collaborators, Don Carpenter from Drummond Carpenter Inc, informed us of a grant opportunity made available through the Michigan Department of Environment, Great Lakes, and Energy (EGLE) Coastal Management Program. The State High Water Infrastructure Grant Program is a one-time funding opportunity that will award \$14.25 million to Michigan coastal communities to address impacts and vulnerabilities presented by severe weather events including flooding, coastline erosion, and stormwater management. Eligible activities listed in the Request for Proposals (RFP), relevant to the Spillway, include the following:

- ≡ Implementation of nature-based and green infrastructure solutions that strengthen climate and storm resiliency and preparedness, or address flooding, coastline erosion, urban heat, or storm water management.
- ≡ Development or implementation of climate resiliency projects for storm water management, including restored and constructed wetlands, stream/floodplain connectivity restoration, or other green infrastructure.
- ≡ Habitat restoration projects that directly address the impacts and vulnerabilities presented by high water and severe weather events.

In speaking with EGLE staff, Don believes the planning, design, and implementation of nature-based solutions along the Clinton River Spillway would be a well-received project. The funding can be used to update the previously prepared climate resiliency plan, review/update hydrologic models of the Clinton River Spillway to promote resiliency, quickly refine existing designs, and actually implement additional coastal wetland habitat improvements.

In summary, the Program will fund planning, design, and/or implementation of nature based and green infrastructure projects. Funding is limited to \$1.5 Million per applicant and will require a 20% funding match. Projects must be completed by September 30, 2026. **Applications are due by November 30, 2022.** Project awards are expected in early 2023.

Provided the Drainage Board is comfortable with the 20% match requirement, HRC and Drummond Carpenter would apply for the grant at no cost to the district since we already have all the information needed to quickly fill out the application. We will work with MCPWO and OCWRC staff to determine the next highest priority section that meets the grant criteria. If successful, HRC would lead the design and construction effort utilizing Drummond Carpenter's expertise to improve the existing designs for climate resiliency and implement this work.

Based on our tracking of grant opportunities and the general lack of EPA, EGLE, and other's interest in funding large water quality projects in southeast Michigan over the past few years, this program represents a great chance to continue the transformation work this Board has done over the last 10+ years on the Clinton River Spillway.

We look forward to discussing this matter further at your next meeting. In the meanwhile, please contact me with any questions at 248.535.3414 or jburton@hrcengr.com.

Very truly yours,

HUBBELL, ROTH & CLARK, INC.



James F. Burton
Vice President

pc: DC; D. Carpenter
HRC; File

MICHIGAN DEPARTMENT OF ENVIRONMENT, GREAT LAKES, AND ENERGY

WATER RESOURCES DIVISION

State High Water Infrastructure Grant Program 2023 Request for Proposals

Introduction

Under Section 1006 of PA 87 of 2021, the Michigan Legislature appropriated \$14.25 million to the Michigan Department of Environment, Great Lakes, and Energy (EGLE) for a grant program to provide infrastructure and planning grants that directly address the impacts and vulnerabilities presented by severe weather events, with a focus on projects that address flooding, coastline erosion, urban heat, and storm water management. The goal is obligate the entire available funding with this one Request for Proposal funding opportunity.

Eligibility

Regional councils of government and local units of government are eligible to apply. A local unit of government may act as a primary project sponsor and fiduciary for a grant that includes partnerships or consortiums with other public or nonprofit organizations. Applicants must demonstrate their project will address the impacts and vulnerabilities presented by high water and severe weather events.

Eligible Activities

Funding is available statewide and restricted to infrastructure and planning projects that directly address the impacts and vulnerabilities presented by high water severe weather events (e.g., projects that address flooding, coastline erosion, urban heat, and storm water management). Eligibility of activities will be project-specific and determined on a case-by-case basis. Any activities or costs not directly related to the proposed project or costs incurred outside of the project period are not eligible. Eligible activities under this funding opportunity include:

- Development of local or regional resiliency plans.
- Updating local master plans to consider high water levels, climate and storm resiliency, the dynamic nature of the Great Lakes, infrastructure risk assessments for climate and storm resiliency, or nature-based or green infrastructure to address flooding, coastline erosion, urban heat, or storm water management.
- Implementation of nature-based and green infrastructure solutions that strengthen climate and storm resiliency and preparedness, or address flooding, coastline erosion, urban heat, or storm water management.
- Development of feasibility studies or engineering plans for nature-based and green infrastructure projects that address climate and storm resiliency.
- Relocation and protection of critical infrastructure (e.g., roads, sewer, water line) using nature based and climate resilient principles.
- Development or implementation of climate resiliency projects for storm water management, including restored and constructed wetlands, stream/floodplain connectivity restoration, or other green infrastructure.
- Habitat restoration projects that directly address the impacts and vulnerabilities presented by high water and severe weather events.

Application Requirements

The maximum grant amount allowable per applicant is \$1,500,000 and will require a minimum of 20 percent matching funds. The grant award start date is anticipated as early as April 1, 2023, and projects must be completed by September 30, 2026.

The total grant award will be based on reasonably estimated costs and documentation provided by the grantee at grant application. The grant will function on a reimbursement basis where work is reported quarterly and expenses are based on costs incurred and paid and associated invoices or other appropriate supporting documentation are submitted to EGLE, prior to grant funds being reimbursed to the grantee.

Applications are to be submitted in PDF form to EGLE-WRD-CoastalProgram@Michigan.gov and must be received no later than **November 30, 2022**.

Process, Schedule, and Deadlines

Applications will be batched and scored based on the how well the project addresses the impacts and vulnerabilities presented by high water and severe weather events. EGLE will use a cross-discipline team to rank all applications and prioritize funding accordingly. Applications will be scored in winter 2022 and awards will be made in early 2023.

EGLE may request additional information for clarification purposes. EGLE may offer grant amounts other than those requested and request changes to the proposed work plan. Submitted application information is not confidential. Grant applications are considered public information under the Freedom of Information Act, 1976 PA 442, as amended.

Successful applicants will be required to enter into a grant agreement with EGLE. A grant agreement consists of standard “boilerplate” language and the applicant’s project description, work plan, timeline, and budget information.

Contact

For questions about this grant opportunity, contact Emily Kirkpatrick, Coastal Management Program Unit, Field Operations Support Section, Water Resources Division (WRD), at 517-420-5921 or KirkpatrickE@Michigan.gov or Ronda Wuycheck, Supervisor, Coastal Management Program Unit, Field Operations Support Section, WRD, at 517-420-5921 or WuycheckR@Michigan.gov.

If you need this information in an alternate format, please contact EGLE-Accessibility@Michigan.gov or call 800-662-9278.

EGLE does not discriminate on the basis of race, sex, religion, age, national origin, color, marital status, disability, political beliefs, height, weight, genetic information, or sexual orientation in the administration of any of its program or activities, and prohibits intimidation and retaliation, as required by applicable laws and regulations. Questions or concerns should be directed to the Nondiscrimination Compliance Coordinator at EGLE-NondiscriminationCC@Michigan.gov or 517-249-0906.

Although this publication makes every effort to teach users how to meet applicable compliance obligations, use of this publication does not constitute the rendering of legal advice.

4th Tuesday of the Month

- January 24, 2023
- February 28, 2023
- March 28, 2023
- April 25, 2023
- May 23, 2023
- June 27, 2023

3rd Wednesday of the Month (corresponds with OMID)

- July 19, 2023
- August 16, 2023
- September 20, 2023
- October 18, 2023
- November 15, 2023
- December 20, 2023

<u>Funding Source</u>	<u>Apportionment</u>	<u>Manager</u>	<u>Vendor</u>	<u>Amount</u>	<u>Invoice Detail</u>	<u>Project Summary</u>	<u>Project Balance</u>
Clinton River Spillway	Chapter 21	Baker	Aloia & Associates, P.C.	\$ 1,600.75	Invoice #26113 - 04.01.22	Property Ownership Review	
		Baker	Aloia & Associates, P.C.	\$ 641.25	Invoice #26843 - 08.01.22	Parcel Ownership Reviews	
		Acciavatti	BMS Cat LLC/Jarvis Property Restoration	\$ 1,117.28	Invoice #DET-22-00866M-44174 - 07.11.22	Debris/Vegetation Removal	
		Bednar	Cardno, Inc.	\$ 590.00	Invoice #IN37671 - 06.30.22	Seed - Grant	
		Downing	Marino's Landscape	\$ 840.00	Invoice #17645 - 5.31.22	Lawn Care May 2022	
		Downing	Marino's Landscape	\$ 840.00	Invoice #18485 - 06.30.22	Lawn Care June 2022	
		Downing	Marino's Landscape	\$ 840.00	Invoice #19027 - 07.31.22	Lawn Care July 2022	
		Downing	Marino's Landscape	\$ 1,260.00	Invoice #19558 - 08.31.22	Lawn Care August 2022	
		Downing	Marino's Landscape	\$ 840.00	Invoice #20592 - 09.30.22	Lawn Care September 2022	
		Baker	Nickel & Saph	\$ 5,044.00	Invoice #22020 - 6.17.22	Insurance Renewal - 06.28.22 - 09.30.22	
		Baker	Nickel & Saph	\$ 14,336.00	Invoice #22020P - 6.17.22	Insurance Renewal - 10.01.22 - 06.27.23	
		Stockel	Robert Clancy Contracting	\$ 25,445.00	Invoice #10335 - 5.26.22	Emergency Repairs - Wellington Crescent -Final	
		Bednar	Six Rivers Land Conservancy	\$ 1,400.00	Invoice # 1328 - 01.31.22	AOC EPA Monitoring Project - Grant (FINAL)	
		Total			\$ 54,794.28		

YTD Trial Balance

Fund: Clinton River Spillway

As of Fiscal Period: Oct 1, 2022-Oct 31, 2022

	O&M Balance 9/30/2022	O&M	TOTAL 10/31/2022
Cash - Operating	347,902	0	347,902
Accounts Receivable			0
Assets			0
Liabilities			0
Revenues		0	0
Expenditures		0	0
Equity	347,902		347,902